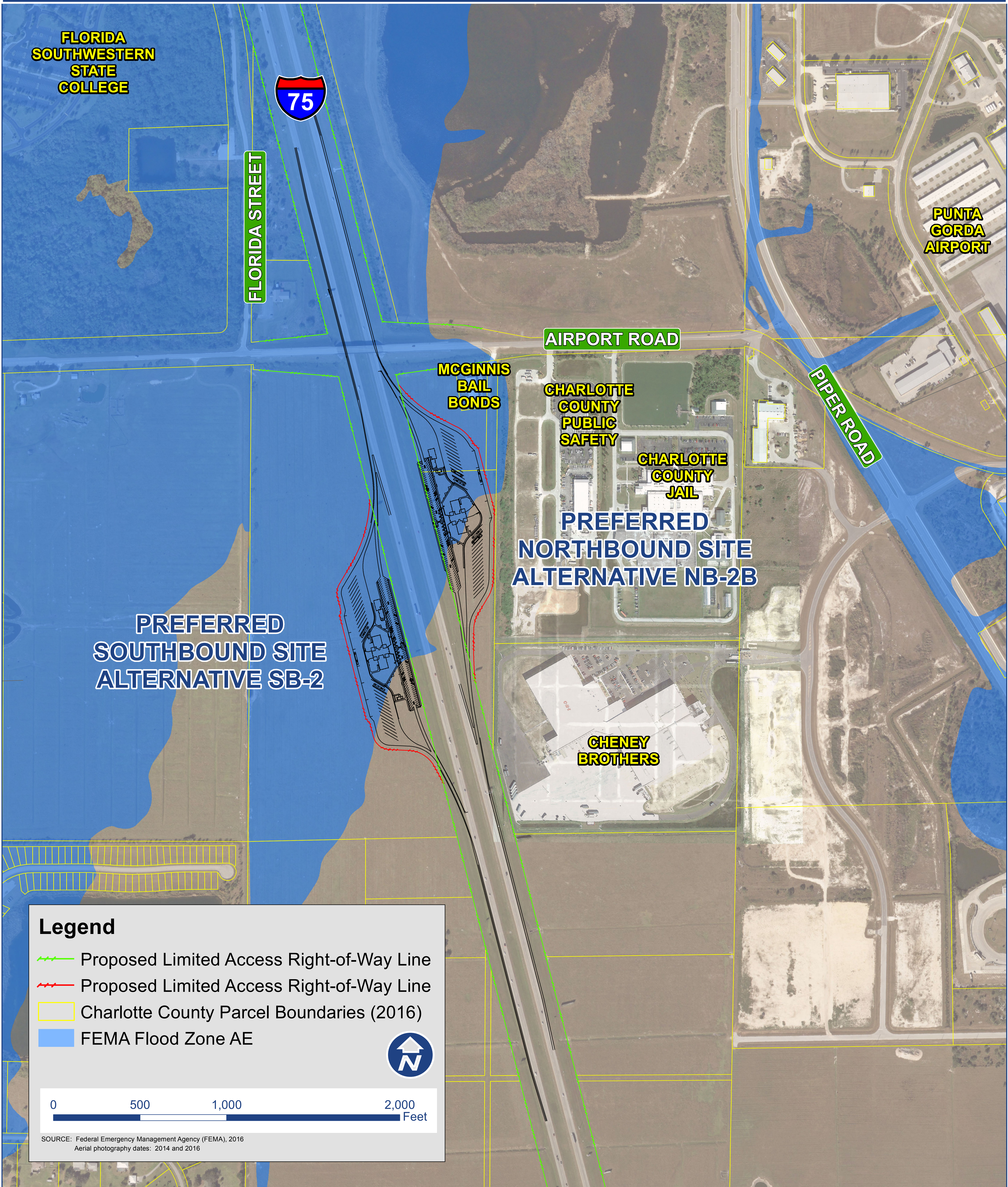




# I-75 REST AREAS PROJECT DEVELOPMENT AND ENVIRONMENT (PD&E) STUDY

I-75 from Charlotte/Lee County Line north to the interchange of SR 681 and I-75 in Sarasota County  
FPID No.: 436602-1-22-01

## FEMA FLOODPLAIN MAP



### Legend

- Proposed Limited Access Right-of-Way Line
- Proposed Limited Access Right-of-Way Line
- Charlotte County Parcel Boundaries (2016)
- FEMA Flood Zone AE



SOURCE: Federal Emergency Management Agency (FEMA), 2016  
Aerial photography dates: 2014 and 2016