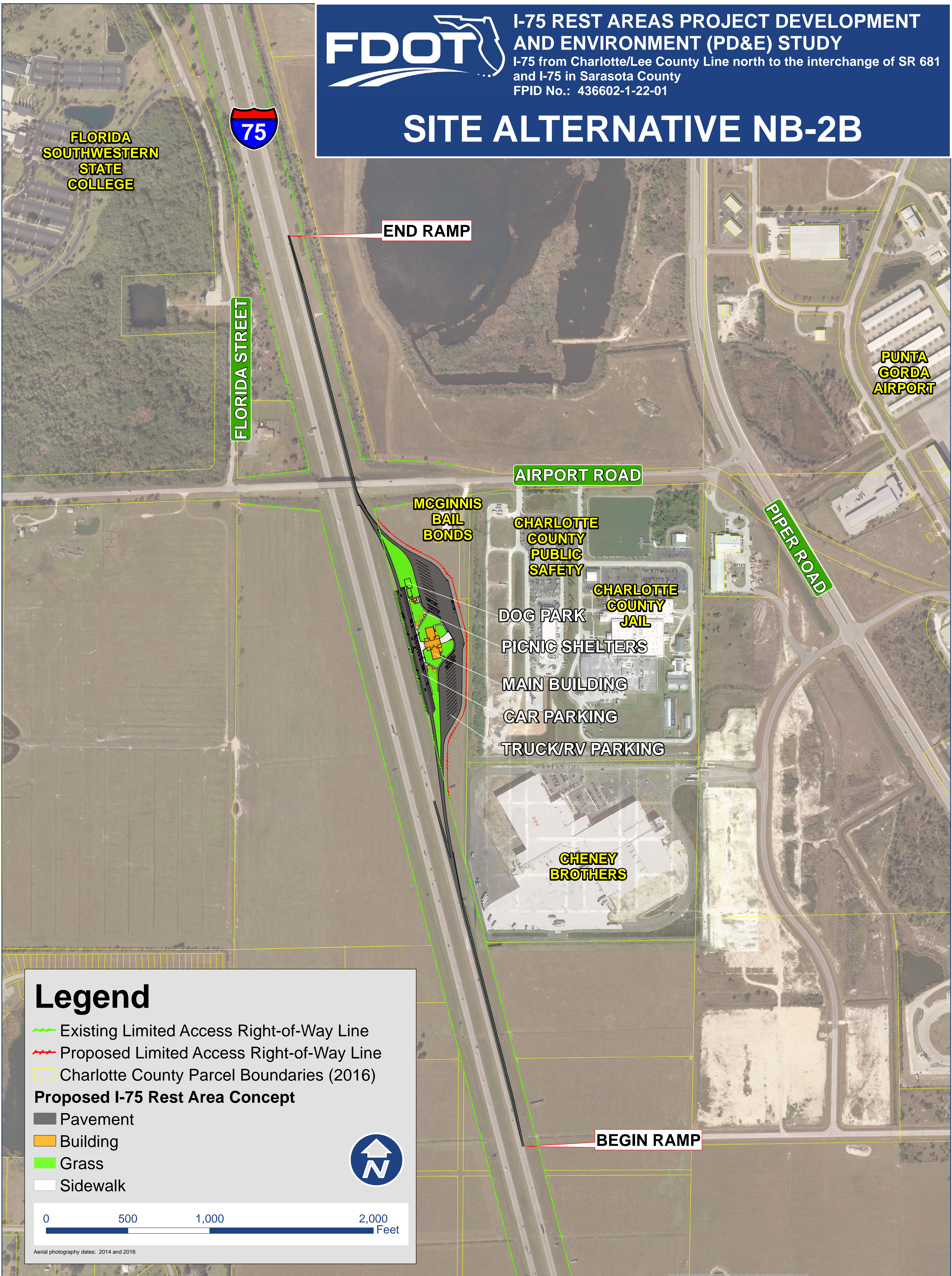




I-75 REST AREAS PROJECT DEVELOPMENT AND ENVIRONMENT (PD&E) STUDY

I-75 from Charlotte/Lee County Line north to the interchange of SR 681 and I-75 in Sarasota County
FPID No.: 436602-1-22-01

SITE ALTERNATIVE NB-2B



FLORIDA SOUTHWESTERN STATE COLLEGE



END RAMP

FLORIDA STREET

PUNTA GORDA AIRPORT

AIRPORT ROAD

MCGINNIS BAIL BONDS

CHARLOTTE COUNTY PUBLIC SAFETY

CHARLOTTE COUNTY JAIL

DOG PARK

PICNIC SHELTERS

MAIN BUILDING

CAR PARKING

TRUCK/RV PARKING

PIPER ROAD

CHENEY BROTHERS

BEGIN RAMP

Legend

- Existing Limited Access Right-of-Way Line
- Proposed Limited Access Right-of-Way Line
- Charlotte County Parcel Boundaries (2016)

Proposed I-75 Rest Area Concept

- Pavement
- Building
- Grass
- Sidewalk



Aerial photography dates: 2014 and 2016